

SURVEYOR-HD WIDE ANGLE

Colour Zoom Camera



underwater **vision** specialists

Features

- 10:1 Optical Zoom
- High Resolution 800 TVL
- High Definition 1080i/720p HD
- Component, HD-SDI or HD-SDI Over Fibre Output
- 65° Diagonal Angle of View
- 4,000 Metre Rated Titanium Housing



Description

The Bowtech Products SURVEYOR-HD WIDE ANGLE underwater HDTV camera is designed to provide a 33% increase in angle of view, from the standard SURVEYOR-HD, whilst remaining compact and very competitively priced. The camera is ideal for ROV inspection tasks, scientific observation and broadcast applications.

Video output is available as component (Y/Pb/Pr), utilising standard connectors or HD-SDI on hybrid 75Ω coaxial or fibre optic connectors, a composite video output is also available.

The camera is available in a variety of control formats, including the Bowtech Products GUI, which facilitates the control of all features including white balance, auto tracking and back light compensation, which can be switched on or off using the GUI.

Excellent images are obtained, through the sapphire window and 10:1 zoom optics, wide 61° angle of view, which is ideal for overall scenes and close-up inspection.



© Bowtech Products Ltd 2012 All rights reserved.
Bowtech Products Ltd reserves the right to change the above specifications without notice.

T +44 1224 772345
F +44 1224 772900

sales@bowtech.co.uk
www.bowtech.co.uk

Last updated 30th April 2013
Revision: 0

SURVEYOR-HD WIDE ANGLE

Colour Zoom Camera



underwater **vision** specialists

Specification – SURVEYOR-HD WIDE ANGLE

ELECTRICAL

Resolution, Horizontal:	800 TV Lines
Pixels:	1920 H x 1080 V
Sensor Type:	1/3" HD CMOS
Sensitivity (limiting):	0.1 Lux (faceplate)
Sensitivity:	11 Lux Typical @ f1.8, 50 IRE
Limiting Scene Illumination:	1.5 Lux with 100% Reflection
Signal to Noise Ratio:	>50dB
Voltage:	11-30Vdc
Current:	400mA Maximum
HD Video Output:	Component Y/Pb/Pr, HD-SDI or HD-SDI Over Fibre Out
HD Format:	1080i 50 or 60 fps 720p 50 or 60 fps (user selectable)
HD Video Output:	PAL & NTSC Composite
Video Aspect Ratio:	16:9 or 4:3 (user selectable)
Electro-magnetic Compatibility:	EN50081-1 Emission/EN50082-1 Immunity
Control Options:	Single Wire Tristate, Two Wire Bipolar, RS-232 Input

ENVIRONMENTAL

Water Depth:	4,000m (13,000ft)
Storage Temperature:	-40 to +85°C
Operating Temperature:	-5 to +50°C
Shock 3 Axis: (operating)	30g Peak, 6ms Half-sine Pulse
Vibration 3 Axis: (operating)	10g, 20-150Hz

OPTICAL

Optical Zoom:	10:1 3.8mm to 38.0mm Focal Length
Digital Zoom:	4x (40x with optical zoom) Deactivated as Standard
Iris:	Automatic, f1.6 to Close
Focus Control:	Front Window to Infinity (wide), 1500mm to Infinity (zoom)
Angle of View:	91° Diagonal in Air, 65° Diagonal in Water
Window:	Sapphire Glass

MECHANICAL

Housing Diameter:	98.4mm (3.87") Front Retainer
Length:	209.1mm (8.27") Excluding Connector
Weight in Air:	2.85kg (6.3lbs)
Weight in Water:	1.52kg (3.3lbs)
Standard Housing:	Titanium Alloy Grade 5 6AL-4V ASTM B3 48
Standard Connector:	Large Selection of Connectors Available



© Bowtech Products Ltd 2012 All rights reserved.
Bowtech Products Ltd reserves the right to change the above specifications without notice.

T +44 1224 772345
F +44 1224 772900

sales@bowtech.co.uk
www.bowtech.co.uk

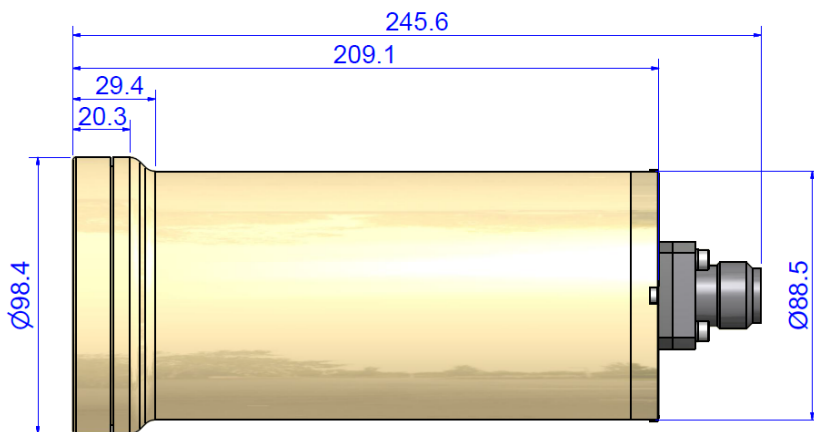
Last updated 30th April 2013
Revision: 0

SURVEYOR-HD WIDE ANGLE Colour Zoom Camera

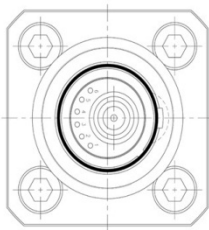


underwater **vision** specialists

Specification



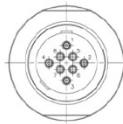
Connector Options



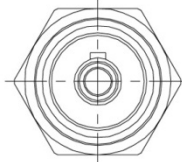
MINL-551506-75OHM6#20-FCR



5506-1508



OPT-8-FCR



OPT-1-FCR

(connector face patterns not to scale)



© Bowtech Products Ltd 2012 All rights reserved.
Bowtech Products Ltd reserves the right to change the
above specifications without notice.

T +44 1224 772345
F +44 1224 772900

sales@bowtech.co.uk
www.bowtech.co.uk

Last updated 30th April 2013
Revision: 0