

SURVEYOR-100-HD

HD Colour Zoom Camera



underwater **vision** specialists

Features

- 10:1 Optical Zoom
- High Resolution 800 TVL
- 1080i/720p HD
- Component, HD-SDI or Fibre Output
- 45° Diagonal Angle of View
- 100 Metre Rated 316 Stainless Steel Housing



Description

The Bowtech Products SURVEYOR-100-HD high definition underwater colour zoom camera, utilises Sony's latest block camera, which incorporates a 1/3 inch HD CMOS CCD (giving exceptional picture quality), 10:1 optical zoom lens, as well as horizontal resolution of 800 TV lines.

Standard video output is component, however HD-SDI, or a large selection of other outputs are available as options.

A unique feature of this camera, apart from the exceptional picture quality, is its size. The camera is housed in a stainless steel, 100 metre rated housing, with optically clear Spectrosil® (non-browning fused silica) window.



© Bowtech Products Ltd 2012 All rights reserved.
Bowtech Products Ltd reserves the right to change the above specifications without notice.

T +44 1224 772345
F +44 1224 772900

sales@bowtech.co.uk
www.bowtech.co.uk

Last updated 26th April 2013
Revision: 0

Specification – SURVEYOR-100-HD

ELECTRICAL

Resolution, Horizontal:	800 TV Lines
Pixels:	1920 H x 1080 V
Sensor Type:	1/3" HD CMOS
Sensitivity (limiting):	0.1 Lux (faceplate)
Sensitivity:	11 Lux typical @ f1.8, 50 IRE
Limiting scene illumination:	1.5 Lux with 100% Reflection
Signal to Noise Ratio:	>50dB
Voltage:	11-30Vdc
Current:	400mA Maximum
HD Video Output:	Component Y/Pb/Pr or HD-SDI or Fibre Out
HD Format:	1080i 50 or 60 fps or, 720p 50 or 60 fps (user selectable)
SD Video Output:	PAL & NTSC Composite
Video Aspect Ratio:	16:9 or 4:3 (user selectable)
Electro-magnetic Compatibility:	EN50081-1 Emission/EN50082-1 Immunity
Control Options:	Single Wire Tristate, Two Wire Bipolar, RS-232 Input, USB, RS-485

ENVIRONMENTAL

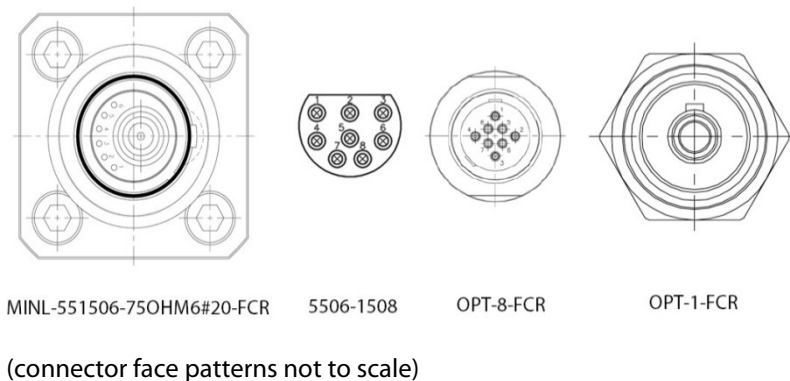
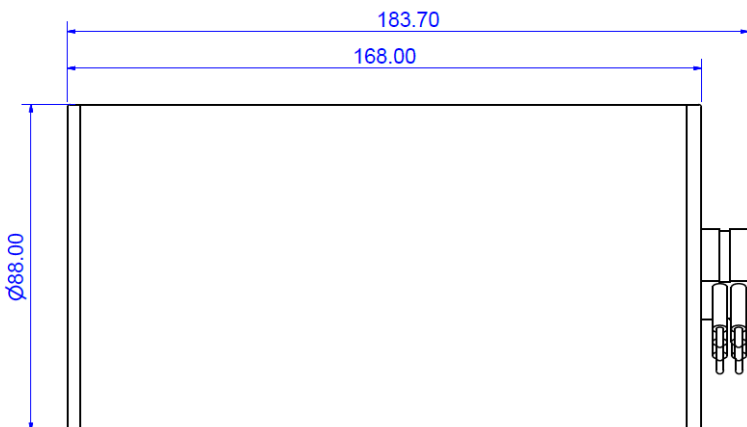
Water Depth:	100m
Storage Temperature:	-20 to +60°C
Operating Temperature:	-5 to +50°C
Shock 3 Axis: (operating)	30g Peak, 6ms Half-sine Pulse
Vibration 3 Axis: (operating)	10g, 20-150Hz

OPTICAL

Optical Zoom:	10:1 5.1mm to 51.0mm Focal Length
Digital Zoom:	4x (40x with optical zoom) Deactivated as Standard
Iris:	Automatic, f1.6 to Close
Focus Control:	Front Window to Infinity (wide), 1500mm to Infinity (zoom)
Angle of View:	61° Diagonal in Air, 45° Diagonal in Water
Window:	Spectrosil® (non-browning fused silica)

MECHANICAL

Housing Diameter:	88mm (3.46") Front Retainer
Length:	168mm (6.61") Excluding Connector
Weight in Air:	2.75kg (6lbs)
Weight in Water:	1.75kg (3.85lbs)
Standard Housing:	316/304 Stainless Steel
Standard Connector:	Large Selection of Connectors Available



© Bowtech Products Ltd 2012 All rights reserved.
Bowtech Products Ltd reserves the right to change the
above specifications without notice.

T +44 1224 772345
F +44 1224 772900

sales@bowtech.co.uk
www.bowtech.co.uk

Last updated 26th April 2013
Revision: 0