

# MINI-BOWCAM

Miniature Underwater Monochrome  
Camera with Integral Lighting



underwater **vision** specialists

## Features

- Latest CCD Technology
- Low Light Sensitivity
- High Resolution
- Very Small Size
- Low Cost
- Splash Proof
- Rugged Construction



## Description

The Bowtech Products MINI-BOWCAM remote TV inspection system has been designed to be used in remote visual inspection tasks, in hostile environments, which require a very small inspection system, specifically for nuclear manipulator applications.

The system uses a miniature camera sensor and high intensity LED lights, which are encapsulated within a polyurethane waterproof elastomer. At the front of the camera, there is a high quality optically clear viewing port.

The camera is supplied with 15 metres of miniature screened highly flexible cable, which is fitted with a single pin connector, as standard, but other options are available.



© Bowtech Products Ltd 2014 All rights reserved.  
Bowtech Products Ltd reserves the right to change the  
above specifications without notice.

T +44 1224 772345  
F +44 1224 772900

[sales@bowtech.co.uk](mailto:sales@bowtech.co.uk)  
[www.bowtech.co.uk](http://www.bowtech.co.uk)

Last updated 1<sup>st</sup> April 2014  
Revision: 1

# MINI-BOWCAM

Miniature Underwater Monochrome  
Camera with Integral Lighting



underwater **vision** specialists

## Specification – MINI-BOWCAM

### ELECTRICAL

|                                 |   |
|---------------------------------|---|
| Resolution, Horizontal:         | 380 TV Lines  |
| Limiting CCD Light Sensitivity: | 0.8 Lux (scene)   |
| Sensor Type:                    | 1/4" CCD  |
| Sensor Elements:                | 320,600 Approx.   |
| Signal to Noise Ratio:          | Better than 46dB (AGC off)                                  |
| Scanning:                       | 625 Lines 50Hz CCIR<br>525 Line 60Hz EIA                    |
| Voltage:                        | Regulated 9 Vdc As Standard. Other Input Voltages Available |
| Current:                        | 175mA Maximum   |
| Composite Video Output:         | 1.0V pk-pk  |
| Lights:                         | 3 x 400 mcd, 60° Output                                     |

### ENVIRONMENTAL

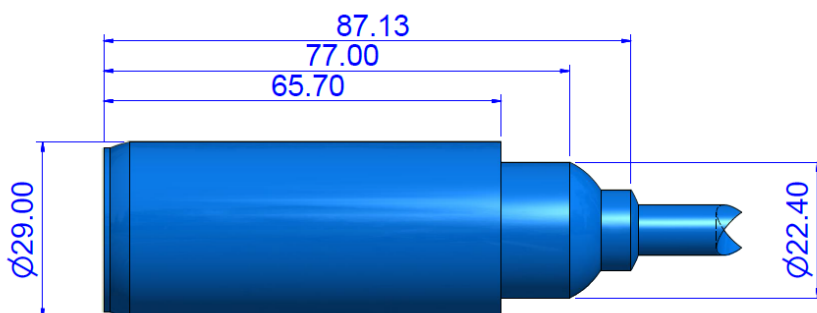
|                        |              |
|------------------------|--------------|
| Storage Temperature:   | -10 to +60°C |
| Operating Temperature: | -10 to +40°C |

### OPTICAL

|                  |   |
|------------------|---|
| Lens:            | 3.8mm, f2.0                                     |
| Electronic Iris: | 1/50th to 1/100,000th sec                       |
| Focus:           | Fixed Focus, Wide Angle Permanently Set         |
| Depth of Field:  | 25mm to 150mm or 150mm to Infinity, Factory Set |
| Port:            | Optically Clear Polished Acrylic                |

### MECHANICAL

|                        |                        |
|------------------------|------------------------|
| Maximum Diameter:      | 30mm O.D               |
| Length:                | 85mm                   |
| Weight in Air:         | 126gms                 |
| Housing:               | Polyurethane Elastomer |
| Connector (when used): | LEMO IP68              |



© Bowtech Products Ltd 2014 All rights reserved.  
Bowtech Products Ltd reserves the right to change the  
above specifications without notice.

T +44 1224 772345  
F +44 1224 772900

sales@bowtech.co.uk  
[www.bowtech.co.uk](http://www.bowtech.co.uk)

Last updated 1<sup>st</sup> April 2014  
Revision: 1