

SEACON®

UNDERWATER ELECTRICAL AND FIBER OPTIC CONNECTORS



55 & 66 SERIES

UNDERWATER ELECTRICAL DRY-MATE CONNECTORS



MANAGEMENT SYSTEM APPROVED IN
ACCORDANCE WITH ISO 9001.

SEACON
europa
LIMITED

SEACON[®]



55 SERIES

UNDERWATER ELECTRICAL DRY-MATE CONNECTORS

SECTION	PAGE
55 SERIES	
Introduction	55 SERIES 3
Availability	55 SERIES 3
Applications.....	55 SERIES 3
Testing	55 SERIES 3
Special Assemblies	55 SERIES 3
Part Number System	55 SERIES 3
General Information.....	55 SERIES 3
Dimension Details:	
5501-CCP	55 SERIES 4
5502-CCR	55 SERIES 4
5506-FCR	55 SERIES 5
5507-BCR	55 SERIES 5
55A1-CCP	55 SERIES 6
55A1-OF-ST CCP	55 SERIES 6
55A1-OF-R/A CCP	55 SERIES 7
55A2-CCR	55 SERIES 7
55R1-CCP	55 SERIES 8
55R2-CCR	55 SERIES 8
Interface Details:	
5507-BCR	55 SERIES 9
5506-FCR	55 SERIES 9
Contact Configurations	55 SERIES 10
66 SERIES SECTION	66 SERIES 1-7

INTRODUCTION

The **SEA CON® 55 SERIES** of underwater electrical dry-mate connectors contain significant design improvements over other industry standard connectors, whilst maintaining compatibility and interchangeability with them. This connector range is also available in PEEK (Polyetheretherketone) which was selected for its superior chemical resistance, excellent electrical properties, wear and abrasion resistance and light weight. This PEEK series of connectors are not affected by corrosion or cathodic delamination.

Key features include:-

- Industry Standard Compatibility
- Proven Sealing Technology
- Heavy Duty Stub Acme Threads (except shell size 15)
- Pressure Rated Blanking Caps available

AVAILABILITY

Pressure rated to 10,000 psi (22,500ft/7,000m), the **55 SERIES** is available in 5 shell sizes with up to 24 contacts with PBOF (Pressure Balanced Oil Filled) options. Manufactured from 316L Stainless Steel as standard, other materials are also available upon request including Titanium, Aluminium Bronze and Alloy 625.

APPLICATIONS

This connector range is suitable for a variety of applications including ROV's, underwater cameras, diver communications, lights and pan and tilts.

TESTING

Please contact **SEA CON®** for details.

SPECIAL ASSEMBLIES

SEA CON® maintains all facilities necessary to furnish complete underwater and environmental electrical connector/cable systems, including Research and Development, Engineering, Manufacturing, Quality Control and Pressure Testing. As well as supplying our standard 'off-the-shelf' items, we have the capability to design and manufacture **SPECIAL CUSTOMIZED CONNECTORS AND CABLE ASSEMBLIES** to suit your individual needs. **SEA CON®** also prides itself with the ability to perform stringent quality conformance testing procedures which are in accordance with the MIL-SPEC programs.

Please contact **SEA CON®** for further information

PART NUMBER SYSTEM - EXAMPLE

5501 - 1502 - 0001	
55	Cable Length (i.e. 0001 = 1 foot, 0002 = 2 feet etc.)
01	Number of Contacts
15	Shell Size (15, 16, 20, 24, 32)
02	01 = CCP - Cable Connector Plug 02 = CCR - Cable Connector Receptacle 06 = FCR - Flange Connector Receptacle 07 = BCR - Bulkhead Connector Receptacle A1 = CCP/AT - Cable Connector Plug/Attachable OF1 = CCP-OF - Cable Connector Plug Oil Filled Straight/Right Angle OFA1 = CCP-OF - Cable Connector Plug Oil Filled Attachable A2 = CCR/AT - Cable Connector Receptacle/Attachable R1 = CCP/RA - Cable Connector Plug/Right Angle R2 = CCR/RA - Cable Connector Receptacle/Right Angle
00	55 Connector Series

GENERAL INFORMATION

COMPONENT	MATERIAL
CONNECTOR SHELL STANDARD: OPTIONAL:	316L Stainless Steel electro polished. Titanium, Aluminium Bronze, Alloy 625 & PEEK. Others available upon request.
ENGAGING NUT STANDARD: OPTIONAL:	316L Stainless Steel coated with a special anti-galling compound. Titanium, Aluminium Bronze & Alloy 625. Others available upon request.
ELECTRICAL CONTACTS	Copper Alloy and gold plated per MIL-G-45204.
CONNECTOR BODY STANDARD: OPTIONAL:	Neoprene. Nitrile, Hypalon. Others available upon request.
OVERMOULD (STANDARD)	Neoprene, Nitrile, Hypalon. Others available upon request.
CABLE STANDARD: OPTIONAL:	Neoprene. Polyurethane & Polyethylene. Others available upon request.
BULKHEAD TAILS	P.T.F.E insulated #16 AWG. Others available upon request. Please contact SEA CON® .

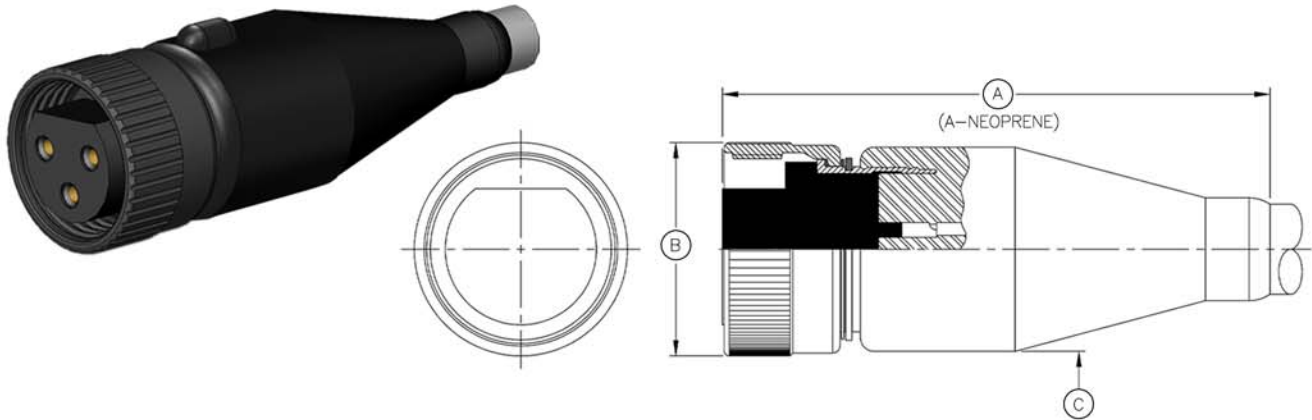
CATEGORY	VALUE
PRESSURE	10,000 psi mated and un-mated.
VOLTAGE RATING (STANDARD)	600 VDC/440 VAC. Contact SEA CON® for higher ratings.
CURRENT (MAXIMUM)	5 to 18 amps dependant on contact and cable conductor size.
BULKHEAD MOUNTING TORQUE	15 shell size = 125 inch/lbs.* 16 shell size = 125 inch/lbs.* 20 shell size = 165 inch/lbs.* 24 shell size = 225 inch/lbs.* 32 shell size = 325 inch/lbs.*
MATING CYCLES	500.

NOTES:

- Dummy connectors are available. Please contact **SEA CON®** for details.
- * Torque values refers to installation into dry metal threads.

55 SERIES 5501-CCP

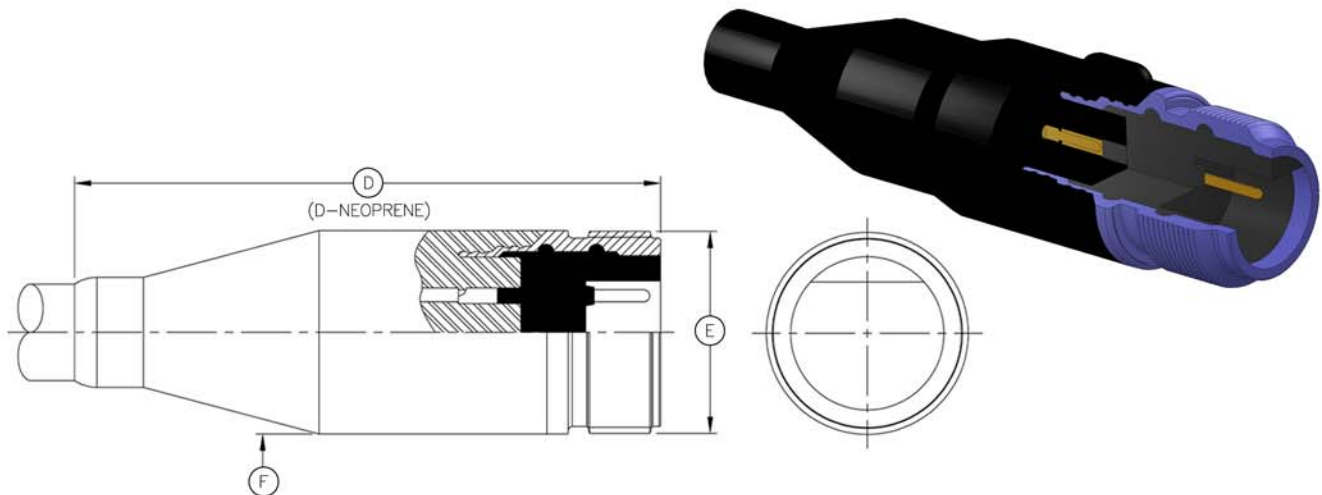
55 SERIES Cable Connector Plug
Mates with 55-BCR/CCR/FCR
Dummy Connector: 55-DSR



CONNECTOR	A - (INCHES)	A - NEOPRENE (INCHES)	B - Ø (INCHES)	C - Ø (INCHES)
5501-15	3.67	2.56	1.07	1.00
5501-16	3.67	2.56	1.17	1.125
5501-20	4.75	3.90	1.45	1.38
5501-24	5.38	3.76	1.70	1.64
5501-32	7.12	7.12	2.23	1.98

55 SERIES 5502-CCR

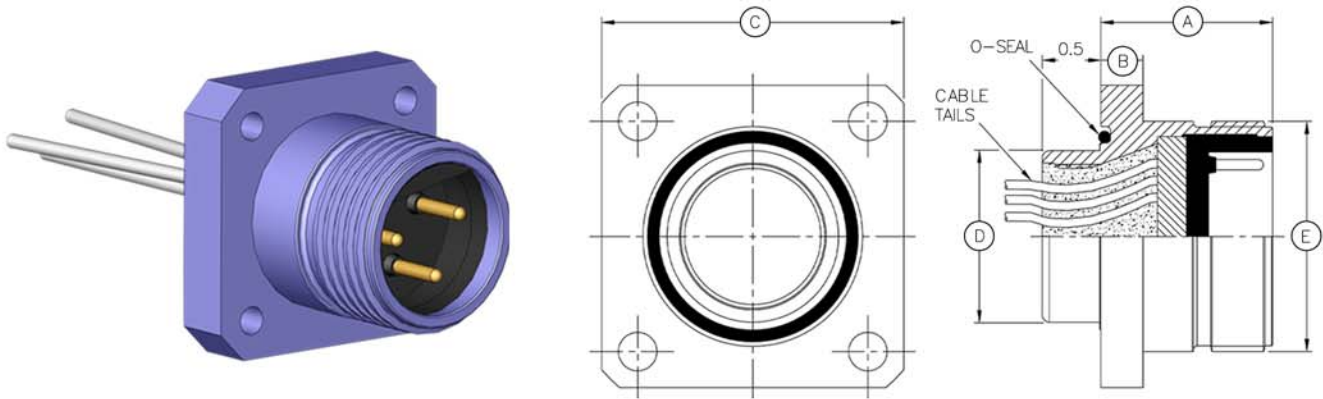
55 SERIES Cable Connector Receptacle
Mates with 55-CCP
Dummy Connector: 55-DSP



CONNECTOR	D - (INCHES)	D - NEOPRENE (INCHES)	E - THREAD	F - Ø (INCHES)
5502-15	3.37	2.62	15/16-20 UNEF	1.00
5502-16	T.B.A.	T.B.A.	T.B.A.	T.B.A.
5502-20	4.95	4.10	1 1/4-9 STUB ACME	1.38
5502-24	5.58	3.96	1 1/2-9 STUB ACME	1.64
5502-32	7.12	7.32	2-9 STUB ACME	1.98

55 SERIES 5506-FCR

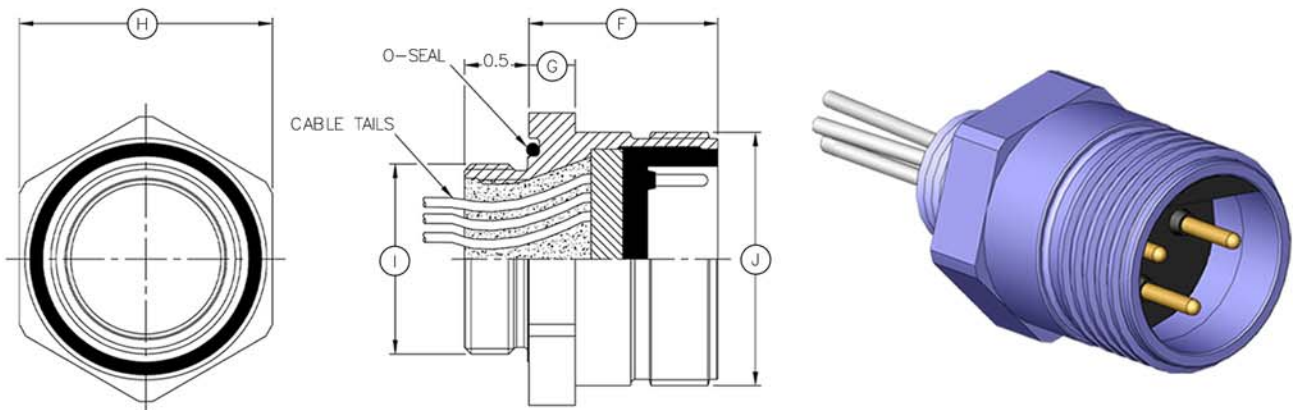
55 SERIES Flange Connector Receptacle
Mates with 55-CCP
Dummy Connector: 55-DSP



CONNECTOR	A - (INCHES)	B - (INCHES)	C - (INCHES)	D - Ø (INCHES)	E - THREAD
5506-15	1.25	0.313	1.50	0.625	15/16-20 UNEF
5506-16	1.50	0.375	1.625	0.625	1-9 STUB ACME
5506-20	1.50	0.375	1.75	0.74	1 1/4-9 STUB ACME
5506-24	1.50	0.375	2.00	0.99	1 1/2-9 STUB ACME
5506-32	1.50	0.375	2.625	1.50	2-9 STUB ACME

55 SERIES 5507-BCR

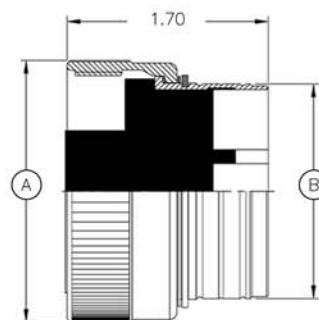
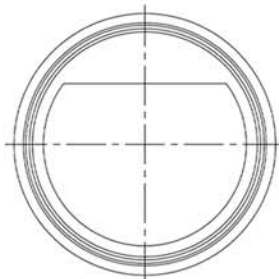
55 SERIES Bulkhead Connector Receptacle
Mates with 55-CCP
Dummy Connector: 55-DSP



CONNECTOR	F - (INCHES)	G - (INCHES)	H - ACROSS FLATS (INCHES)	I - THREAD	J - THREAD
5507-15	1.25	0.313	1.12	5/8-18 UNF	15/16-20 UNEF
5507-16	1.50	0.375	1.12	5/8-18 UNF	1-9 STUB ACME
5507-20	1.50	0.375	1.25	3/4 - 16 UNF	1 1/4-9 STUB ACME
5507-24	1.50	0.375	1.50	1 - 14 UNS	1 1/2-9 STUB ACME
5507-32	1.50	0.375	2.00	1 1/2 - 12 UNF	2-9 STUB ACME

55 SERIES 55A1-CCP/AT

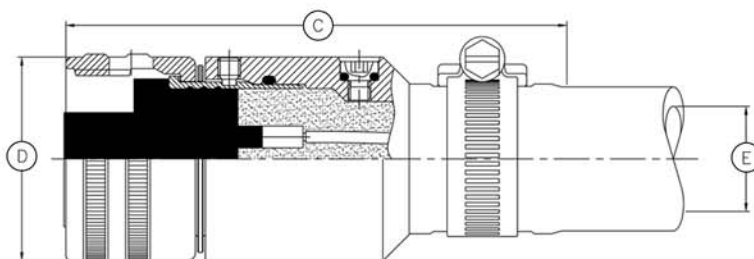
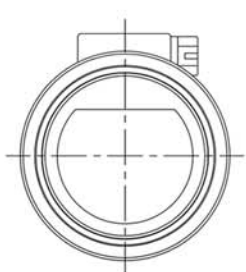
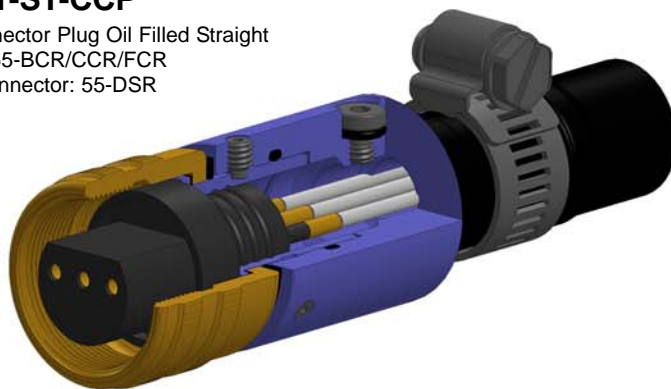
55 SERIES Cable Connector Plug Attachable
Mates with 55-BCR/CCR/FCR
Dummy Connector: 55-DSR



CONNECTOR	A - Ø (INCHES)	B - Ø (INCHES)
55A1-15	1.08	0.69
55A1-16	1.17	0.813
55A1-20	1.45	1.085
55A1-24	1.70	1.30
55A1-32	2.23	1.81

55 SERIES 55OF1-ST-CCP

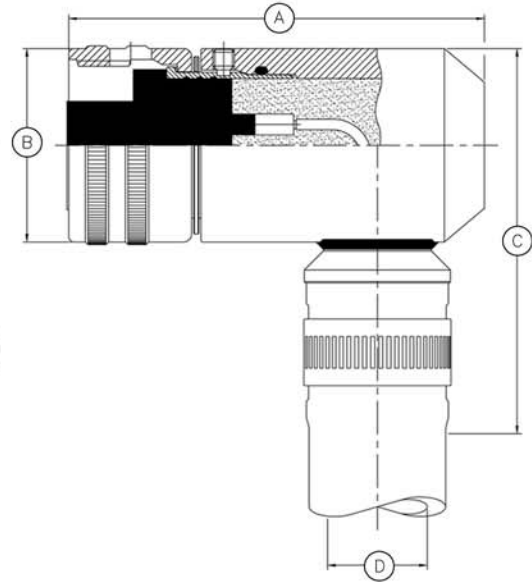
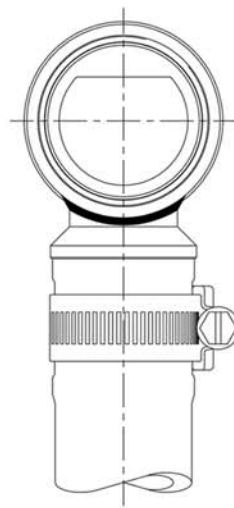
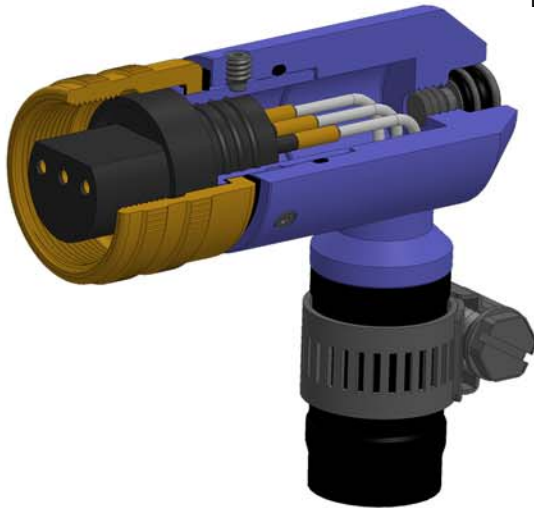
55 SERIES Cable Connector Plug Oil Filled Straight
Mates with 55-BCR/CCR/FCR
Dummy Connector: 55-DSR



CONNECTOR	C - (INCHES)	D - Ø (INCHES)	E - Ø HOSE (INCHES)
55OF1-15	3.56	1.102	0.50
55OF1-20	3.56	1.450	0.75
55OF1-24	3.69	1.670	0.75

55 SERIES 55OF1-R/A-CCP

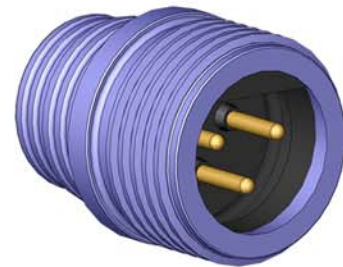
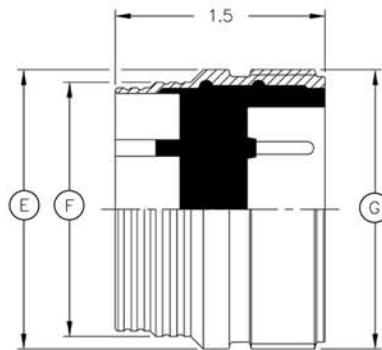
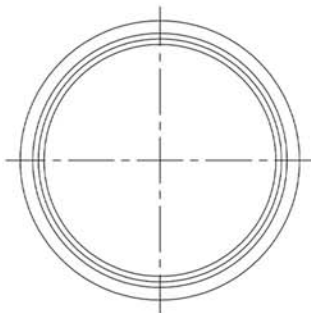
55 SERIES Cable Connector Plug Oil Filled Right Angle
Mates with 55-BCR/CCR/FCR
Dummy Connector: 55-DSR



CONNECTOR	A - (INCHES)	B - Ø (INCHES)	C - (INCHES)	D - Ø HOSE (INCHES)
55OF1-15	2.86	1.102	2.53	0.50
55OF1-20	3.12	1.450	2.88	0.75
55OF1-24	3.12	1.670	3.10	0.75

55 SERIES 55A2-CCR

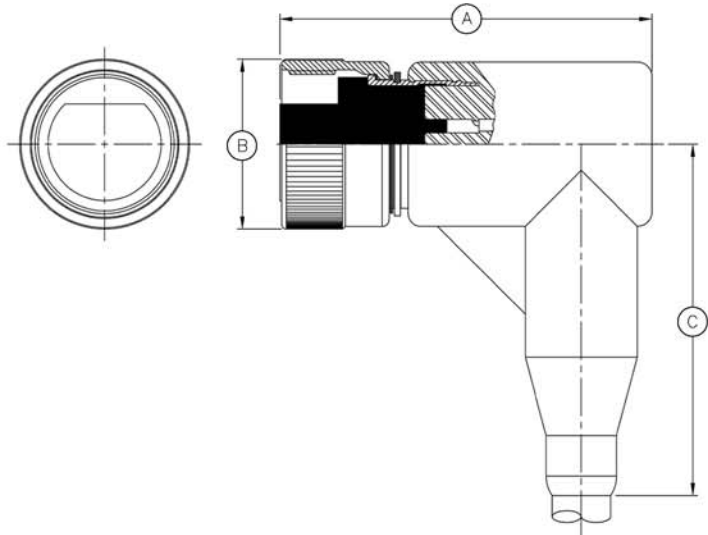
55 SERIES Cable Connector Receptacle/Attachable
Mates with 55-CCP
Dummy Connector: 55-DSP



CONNECTOR	E - Ø (INCHES)	F - Øm(INCHES)	G - THREAD
55A2-15	1.00	0.77	15/16-20 UNEF
55A2-16	T.B.A.	T.B.A.	T.B.A.
55A2-20	1.25	1.02	1 1/4-9 STUB ACME
55A2-24	1.50	1.28	1 1/2-9 STUB ACME
55A2-32	2.00	1.82	2-9 STUB ACME

55 SERIES 55R1-CCP

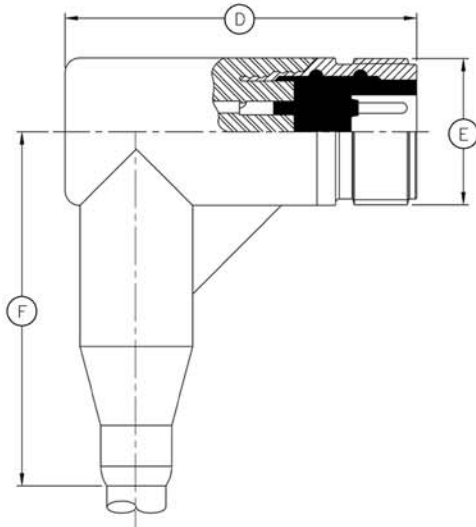
55 SERIES Cable Connector Plug/Right Angle
Mates with 55-BCR/CCR/FCR
Dummy Connector: 55-DSR



CONNECTOR	A - (INCHES)	B - Ø (INCHES)	C - (INCHES)
55R1-15	2.91	1.08	2.63
55R1-16	2.91	1.17	2.63
55R1-20	3.16	1.45	3.42
55R1-24	3.42	1.70	3.84
55R1-32	3.63	2.23	4.85

55 SERIES 55R2-CCR

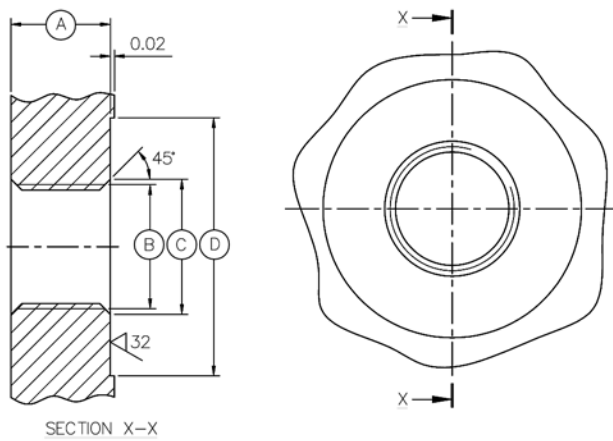
55 SERIES Cable Connector Receptacle/Right Angle
Mates with 55-CCP
Dummy Connector: 55-DSP



CONNECTOR	D - (INCHES)	E - THREAD	F - (INCHES)
55R2-15	2.52	15/16-20 UNEF	2.63
55R2-16	2.52	1-9 STUB ACME	2.63
55R2-20	3.48	1 1/4-9 STUB ACME	3.42
55R2-24	3.52	1 1/2-9 STUB ACME	3.84
55R2-32	3.54	2-9 STUB ACME	4.85

55 SERIES 5507-BCR INTERFACE DETAILS

55 SERIES Bulkhead Connector Receptacle

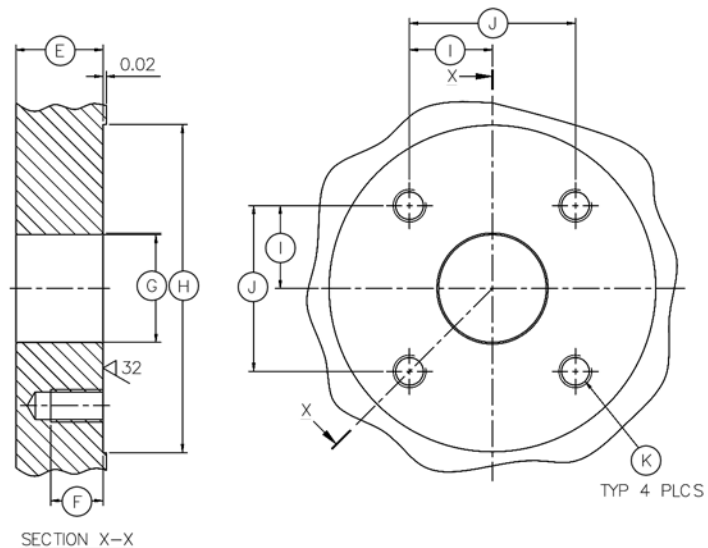


BCR INTERFACE MOUNTING INFORMATION

CONNECTOR	A - MIN (INCHES)	B - THREAD	C - Ø (INCHES)	D - MIN Ø (INCHES)
5507-15	0.50	5/8-18 UNF 2B	0.68	1.30
5507-16	0.50	5/8-18 UNF 2B	0.68	1.30
5507-20	0.50	3/4-16 UNF 2B	0.79	1.44
5507-24	0.50	1-14 UNS 2B	1.05	1.73
5507-32	0.50	1 1/2-12 UNF 2B	1.55	2.31

55 SERIES 5506-FCR INTERFACE DETAILS

55 SERIES Flange Connector Receptacle



FCR INTERFACE MOUNTING INFORMATION

CONNECTOR	E - MIN (INCHES)	F - TYPICAL (INCHES)	G - Ø (INCHES)	H - Ø (INCHES)	I - (INCHES)	J - (INCHES)	K - THREAD	RECOMMENDED FIXING SCREW LENGTH
5506-15	0.525	0.315	0.65	1.98	0.50	1.00	M5x0.8p 6H	15mm
5506-16	0.525	0.315	0.65	2.13	0.5625	1.125	M5x0.8p 6H	16mm
5506-20	0.625	0.375	0.77	2.33	0.625	1.25	M6x1.0p 6H	18mm
5506-24	0.625	0.375	1.02	2.655	0.75	1.50	M6x1.0p 6H	18mm
5506-32	0.825	0.50	1.52	3.53	1.00	2.00	M8x1.25p 6H	20mm

SIZE	55 SERIES CONTACT CONFIGURATIONS AVAILABLE (CCP FACE VIEW ONLY - NOT TO SCALE)					
15	 55XX-1502	 55XX-1503	 55XX-1504	 55XX-1506	 55XX-1508	
16	 55XX-1608					
20	 55XX-2003	 55XX-2004	 55XX-2006	 55XX-2008	 55XX-2013	 559X-2004
24	 55XX-2410	 55XX-2412	 55XX-2420			
32	 55XX-3210	 55XX-3212	 55XX-3216	 55XX-3221	 55XX-3224	
<div>KEY</div> <div> #16 SOCKET CONTACT</div> <div> #12 SOCKET CONTACT</div> <div> #10 SOCKET CONTACT</div> <div> #8 SOCKET CONTACT</div>						

S E A C O N[®]



66 SERIES

UNDERWATER ELECTRICAL DRY-MATE CONNECTORS

SECTION

PAGE

66 SERIES

Introduction	66 SERIES 3
Availability	66 SERIES 3
Applications	66 SERIES 3
Testing	66 SERIES 3
Environmental Testing Capability	66 SERIES 3
Part Number System	66 SERIES 3
General Information.....	66 SERIES 3
Dimension Details:	
6601-CCP	66 SERIES 4
6606-FCR	66 SERIES 5
5507-BCR	66 SERIES 5
Interface Details:	
6607-BCR	66 SERIES 6
6606-FCR	66 SERIES 6
Contact Configurations	66 SERIES 7

INTRODUCTION

SEACON (europe) Ltd is pleased to announce the release of a new range of underwater electrical dry-mate connectors to compliment the existing 55 SERIES. The new 66 SERIES of reverse gender connectors enable power to be applied to the bulkhead connector yet still be safe to use. Manufactured utilizing tried and tested methods and materials, this new range also incorporates shorter locking sleeves to ensure easier mating capability.

Other key features include:-

- Industry Standard Compatibility
- Proven Sealing Technology
- Heavy Duty Stub Acme Threads*
- Pressure Rated Blanking Caps available

AVAILABILITY

The 66 SERIES is currently available in two shell sizes; 16 and 20 with two configurations (8#16/13#16), however more configurations will be added to the range if required.

APPLICATIONS

This new connector range is suitable for a variety of applications including ROV's, underwater cameras, diver communications, lights and pan and tilts.

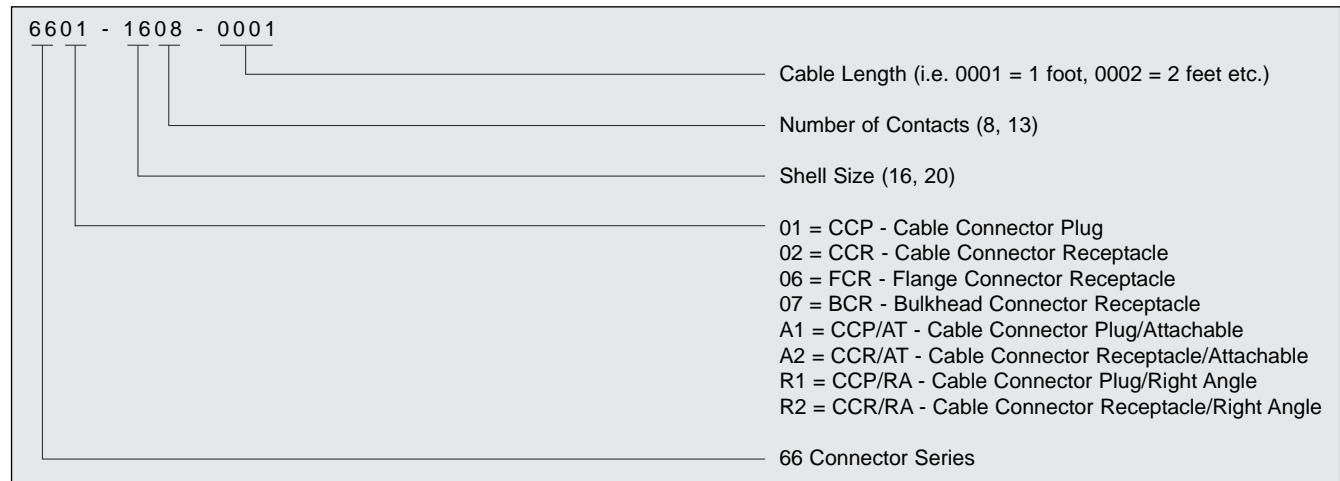
TESTING

Please contact SEACON® for details.

SPECIAL ASSEMBLIES

SEACON® maintains all facilities necessary to furnish complete underwater and environmental electrical connector/cable systems, including Research and Development, Engineering, Manufacturing, Quality Control and Pressure Testing. As well as supplying our standard 'off-the-shelf' items, we have the capability to design and manufacture **SPECIAL CUSTOMIZED CONNECTORS AND CABLE ASSEMBLIES** to suit your individual needs. SEACON® also prides itself with the ability to perform stringent quality conformance testing procedures which are in accordance with the MIL-SPEC programs.

Please contact SEACON® for further information

PART NUMBER SYSTEM - EXAMPLE**GENERAL INFORMATION**

COMPONENT	MATERIAL
CONNECTOR BODY BCR/CCP/FCR	316L Stainless Steel Shell / Neoprene internals
CONTACTS	Gold plated per MIL-G-45204
O-RING	Nitrile N70
ENGAGING NUT	316L Stainless Steel coated with special anti-galling compound
IN-LINE CABLE	Neoprene. Other materials are also available. Please contact SEACON® for details
SPIRAL RETAINING RING	316L Stainless Steel

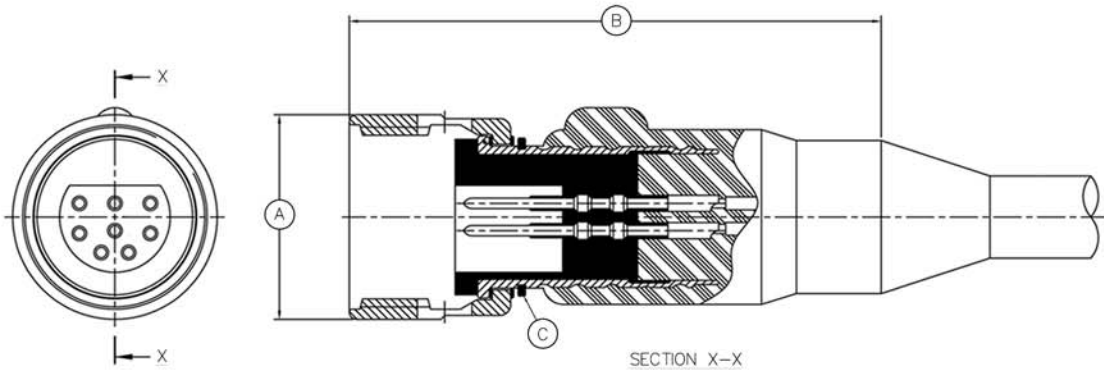
CATEGORY	VALUE
OPEN FACE PRESSURE	Up to 10,000 psi
MATED PRESSURE	10,000 psi
VOLTAGE RATING	600 VDC / 440 VAC
CURRENT	7 amps (contacts 13 amps) and cable dependent
BULKHEAD MOUNTING TORQUE	16 shell size = 125 inch/lbs* 20 shell size = 165 inch/lbs*

NOTE:

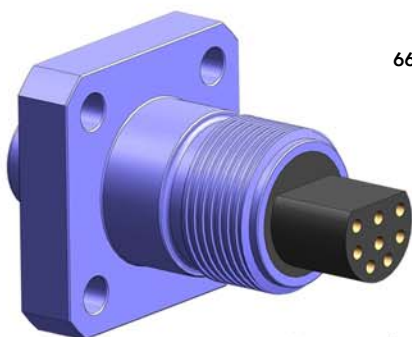
- * Torque values refers to installation into dry metal threads.

66 SERIES
6601-CCP

66 SERIES Cable Connector Plug
Mates with 66-BCR/CCR/FCR
Dummy Connector: 66-DSR

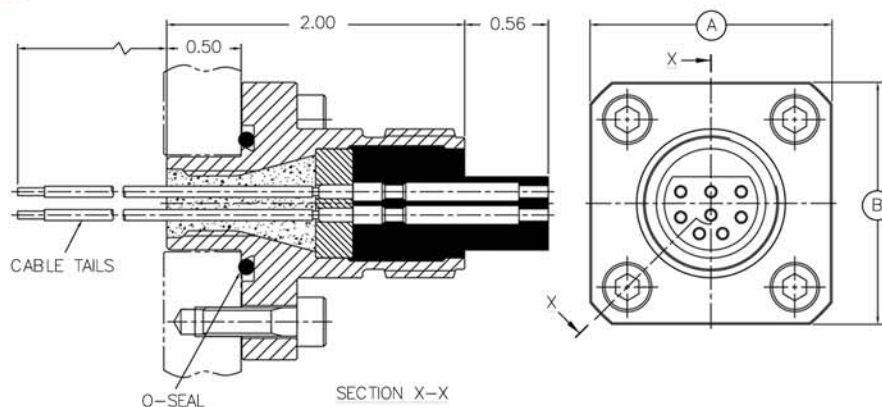


CONNECTOR	A - Ø (INCHES)	B - LENGTH (INCHES)	C
6601-16	1.17	3.04 APPROX	SPIRAL RETAINING RING
6601-20	1.45	3.70 APPROX	CIRCLIP



66 SERIES 6606-FCR

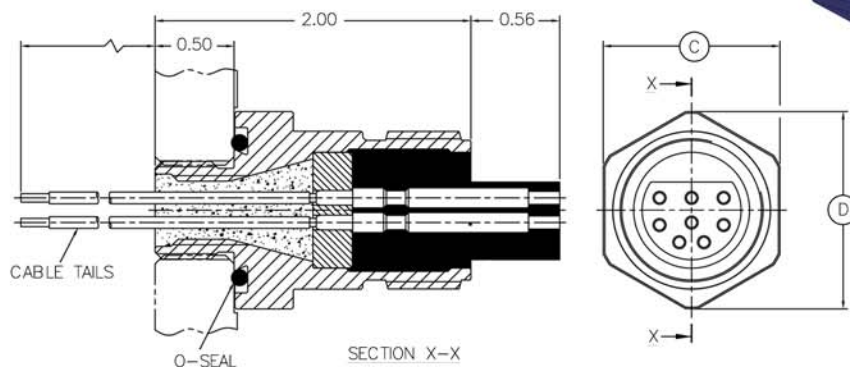
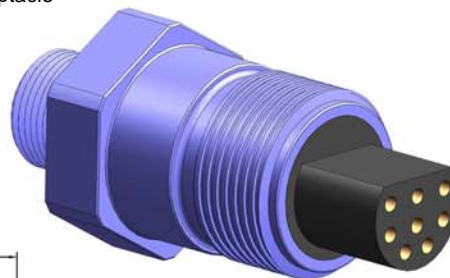
66 SERIES Flanged Connector Receptacle
Mates with 66-CCP
Dummy Connector: 66-DSP



CONNECTOR	A - (INCHES)	B - (INCHES)
6606-16	1.625	1.625
6606-20	1.75	1.75

66 SERIES 6607-BCR

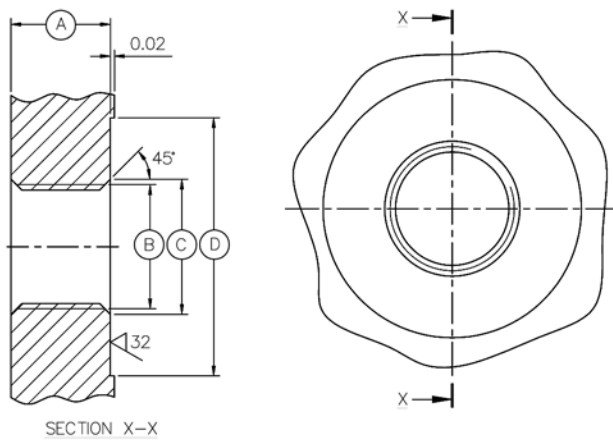
66 SERIES Bulkhead Connector Receptacle
Mates with 66-CCP
Dummy Connector: 66-DSP



CONNECTOR	C - (INCHES)	D - (INCHES)
6607-16	1.12	1.25
6607-20	1.25	1.40

66 SERIES 6607-BCR INTERFACE DETAILS

66 SERIES Bulkhead Connector Receptacle

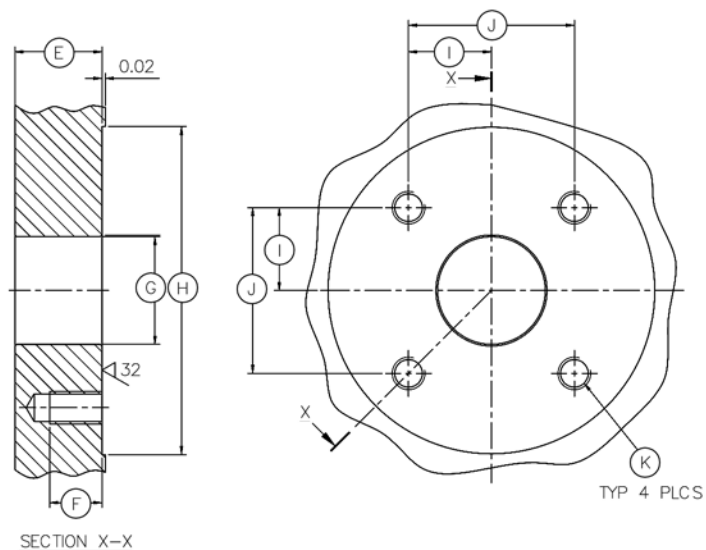


BCR INTERFACE MOUNTING INFORMATION

CONNECTOR	A - MIN (INCHES)	B - THREAD	C - Ø (INCHES)	D - MIN Ø (INCHES)
6607-16	0.50	5/8-18 UNF 2B	0.68	1.30
6607-20	0.50	5/8-16 UNF 2B	0.79	1.44

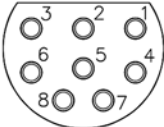
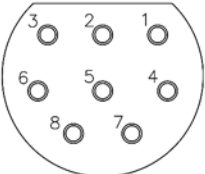
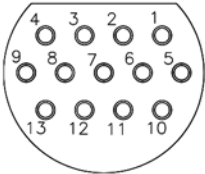

66 SERIES 6606-FCR INTERFACE DETAILS

66 SERIES Flange Connector Receptacle



FCR INTERFACE MOUNTING INFORMATION

CONNECTOR	E - MIN (INCHES)	F - TYPICAL Ø (INCHES)	G - Ø (INCHES)	H - Ø (INCHES)	I - (INCHES)	J - (INCHES)	K - THREAD	RECOMMENDED FIXING SCREW LENGTH
6606-16	0.525	0.315	0.65	2.13	0.5625	1.125	M5x0.8p 6H	16mm
6606-20	0.625	0.375	0.77	2.33	0.625	1.25	M5x0.8p 6H	18mm

SIZE	66 SERIES CONTACT CONFIGURATIONS AVAILABLE (CCP FACE VIEW ONLY - NOT TO SCALE)	
16	<div></div> <div>66XX-1608</div>	
20	<div></div> <div>66XX-2008</div>	<div></div> <div>66XX-2013</div>
	<div><div>KEY</div><div> #16 SOCKET CONTACT</div></div>	

NOTES:
· Shell size 16 only available in 8#16 configuration.

HANDLING PROCEDURES AND SPECIAL CAPABILITIES



SEACON (europe) LTD

Seacon House, Hewett Road,
Gapton Hall Industrial Estate,
Great Yarmouth, Norfolk, NR31 0RB, UK.
TEL: +44 (0) 1493-652733
FAX: +44 (0) 1493-652840
E-Mail: sales@seaconeurope.com
Website: www.seaconeurope.com



SEA CON®

1700 Gillespie Way,
El Cajon, California 92020, USA.
TEL: +1 (619) 562-7071
FAX: +1 (619) 562-9706
E-Mail: seacon@seaconworldwide.com
Website: www.seaconworldwide.com



SEA CON US GULF AREA SALES OFFICE

14511 Old Katy Road, Suite 300,
Houston, Texas 77079, USA.
TEL: +1 (281) 599-3509
FAX: +1 (281) 599-3517
E-Mail: gulfcoastsales@seaconworldwide.com
Website: www.seaconworldwide.com



SEA CON US EAST COAST SALES OFFICE

50 Airport Road,
Westerly, RI 02891, USA.
TEL: +1 (401) 348-0155
FAX: +1 (401) 348-0227
E-Mail: eastcoastsales@seaconworldwide.com
Website: www.seaconworldwide.com



SEA CON FLORIDA SALES OFFICE

Building B, Suite 22,
3959 South Nova Road,
Port Orange, Florida 32127, USA.
TEL: +1 (281) 802-5504
E-Mail: steven.thumbek@seacon-ap.com
Website: www.seaconworldwide.com



SEACON ADVANCED PRODUCTS, LLC

1321 Nelius Road, P.O. Box 767,
Bellville, Texas 77418, USA.
TEL: +1 (979) 865-8846
FAX: +1 (979) 865-8859
E-Mail: sales@seacon-ap.com
Website: www.seacon-ap.com



SEACON BRAZIL

Rua Conde de Bonfim 120 sala 212,
Tijuca, Rio de Janeiro,
Brazil, CEP: 20520-053.
TEL #1: +55 (21) 3592-0920
TEL #2: +55 (21) 3594-0920
CELL: +55 (21) 8849-3336
E-Mail: renata@seacon-ap.com
Website: www.seaconworldwide.com



SEA CON GLOBAL PRODUCTION

Callejon Terrazos #8, Local 2-C,
Las Brisas 1ra. Seccion,
Tijuana, B.C., Mexico C.P. 22610.
TEL: +52 (664) 626-2726
FAX: +52 (664) 686-8922
E-Mail: sales@seaconglobal.com
Website: www.seaconglobal.com
Dial from U.S.A. TEL: +1 (619) 308-7901
TOLL FREE: (888) 562-7072
FAX: +1 (619) 308-7900



SEACON PHOENIX, LLC

15 Gray Lane, Suite 108,
Hopkinton Industrial Park,
Ashaway, RI 02804, USA.
TEL: +1 (401) 637-4952
FAX: +1 (401) 637-4953
E-Mail: sales@seaconphoenixllc.com
Website: www.seaconphoenixllc.com

Even though these procedures appear simple, only qualified technicians should perform the installation and maintenance.

Connectors are designed for installation on one atmosphere vessels. Contact **SEA CON®** for recommendations if using compensated vessels.

INSTALLATION PROCEDURES

Torque values referenced in this literature assume installation into dry metal threads. For other applications, please contact **SEA CON®** for recommendations.

BULKHEAD CONNECTOR (BC): The BC may be installed using one of two methods. The preferred method is to spotface the bulkhead surface and thread the hole, then screw the connector by means of a nut and washer. The bored hole (or threaded hole) should be free of any "burrs" and all o-ring sealing surfaces polished to a number 32 finish. Lubricate the BC o-ring with an appropriate silicon spray or grease before installing. This lubrication should be applied to form an adequate film. Excessive lubrication is detrimental to the operation of the connector. Bulkhead nut, if used, should not be over-torqued.

IN-LINE CONNECTOR: Lubricate the sealing areas around the male pins, using an appropriate silicon spray, or grease lightly.

CARE AND MAINTENANCE

The **55 & 66 SERIES** connectors require very little maintenance. They are designed to be used in harsh environments and thus limited amounts of dirt and grit do not affect their performance.

It is recommended that, upon disconnecting or retrieving the system, the connectors be cleaned, to storage (if possible, remate with dummy plugs). Prior to deployment the following maintenance procedure is recommended:

1. Demate the connector set.
2. Flush connector interface with fresh water (deionized water if available), remove all dirt, grit and grease.
3. Inspect for damage in sealing areas, excessive corrosion, debonding of the cable and connector interface and cuts in the cable jacket.
4. Apply thin film of dielectric compound (DC) grease, silicon based, to sealing areas of male connector and across the face of the female connector*. If the BC is removed from its housing then replace facial o-ring and make sure that o-rings are lubricated and in good condition.
5. Mate the connector halves, wipe away any excess grease off the interface line of the mated set.

* **CAUTION:** The use of some oil-based propellants in spray cans can cause conductivity problems in neoprene.

CABLE AND CONTINUITY PRESERVATION

Avoid sharp bends in cables. Cables subjected to vibration or exposed to seawater drag should be adequately clamped to prevent conductor fatigue and ultimate failure.

All reasonable efforts have been taken to ensure that the information contained herein is accurate at the date of publication, but no representation or warranty as to the accuracy or completeness of such information is intended or to be implied by its inclusion herein. Any and all representations and warranties pertaining to the information and products referred to herein shall be set forth in **SEA CON®** standard sales order form. In addition, **SEA CON®** reserves the right to make changes to the contents hereof without notice, therefore it is suggested that at the time of inquiry, the appropriate sales office or factory be contacted directly for verification of published specifications and products availability.

© 2012 **SEACON (europe) LTD**
ALL RIGHTS RESERVED



REV V